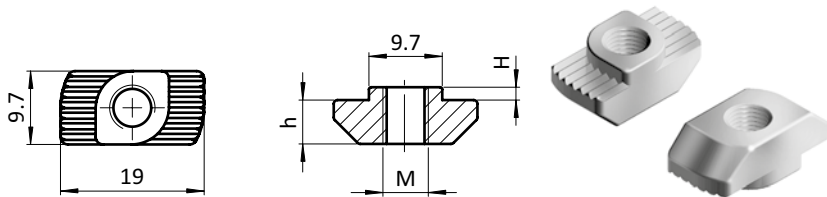


**HAMMER NUT SLOT 10**

<b>MODEL</b>	Slot 10, steel
<b>DESCRIPTION</b>	To fasten components to profiles, breaks the anodized coat of the profile - thus ensuring a safe, ESD electrostatic discharging connection
<b>MATERIAL</b>	Steel / stainless steel
<b>SURFACE</b>	Zinc plated / plain
<b>PACK QUANTITY</b>	100 pieces
<b>SPECIALS</b>	Turning help: Dented thread, thread pitch error or polyamide thread locking dot on request Surface: Zinc-nickel plated or with zinc lamellar plating on request



3

	Material	H [mm]	Size	h [mm]	Weight [g]	Profile	Part #	
Steel		1.3	M4	5.0	4.7		<a href="#">096H10413S02</a>	
		1.3	M5	5.0	4.7		<a href="#">096H10513S02</a>	
		1.3	M6	5.0	4.7		<a href="#">096H10613S02</a>	
		1.3	M8	5.0	4.7		<a href="#">096H10813S02</a>	
		1.5	M5	5.8	6.7		<a href="#">096H10517</a>	
		1.5	M6	5.8	6.2		<a href="#">096H10617</a>	
		1.5	M8	5.8	5.1		<a href="#">096H10817</a>	
		3.0	M4	5.8	7.9	B	<a href="#">096H10430</a>	
		3.0	M5	5.8	7.7	B	<a href="#">096H10530</a>	
		3.0	M6	5.8	7.2	B	<a href="#">096H10630</a>	
		3.0	M8	5.8	6.1	B	<a href="#">096H10830</a>	
		3.0	10-32 UNF	5.8	7.6	B	<a href="#">096H1010-3230</a>	
		3.0	1/4-20 UNC	5.8	6.8	B	<a href="#">096H101/430</a>	
		3.0	5/16-18 UNC	5.8	6.2	B	<a href="#">096H105/1630</a>	
	Stainless steel		3.0	M6	5.8	7.3	B	<a href="#">096H10630E</a>
			3.0	M8	5.8	6.1	B	<a href="#">096H10830E</a>
			3.0	1/4-20 UNC	5.8	7.3	B	<a href="#">096H101/430E</a>
			3.0	5/16-18 UNC	5.8	6.2	B	<a href="#">096H105/1630E</a>
		3.0	M6	5.8	7.3		<a href="#">096H10630ES03</a>	
		3.0	M8	5.8	6.1		<a href="#">096H10830ES07</a>	
		3.0	M6	5.8	7.3		<a href="#">096H10630ES04</a>	
		3.0	M8	5.8	6.3		<a href="#">096H10830ES03</a>	